

3 Planning the Enterprise

The aims of this pack

This action pack is designed to provide the information you need on all aspects of a Community Composting operation. Help and advice is offered for all stages, from the initial planning to the distribution of your valuable compost. This card will serve as a check list to help steer you through the operation, from the initial idea to finding uses for your end product. Community Composting projects sometimes fail due to some breakdown in the flow of operations. Careful planning from the beginning will minimise problems.

Aims of the enterprise

The aims of a Community Composting venture are to recycle valuable materials, removing them from the waste stream and producing a good quality compost and other products, which can be used in the garden and landscaping. This will reduce the amount of material being disposed of in landfill sites, and provide a range of products that can be used as a soil improver or growing medium ingredient.

Forming a group

For legal and financial reasons as well as for pooling labour resources, it is necessary to form a recognised group. Legally this has to be a minimum of two persons; in fact this is likely to be a small group of like-minded individuals who want to start making compost or who are already involved in some related activity, such as another form of recycling or allotment gardening. This group of individuals can then form a Composting Club
(see *Legal Aspects*).

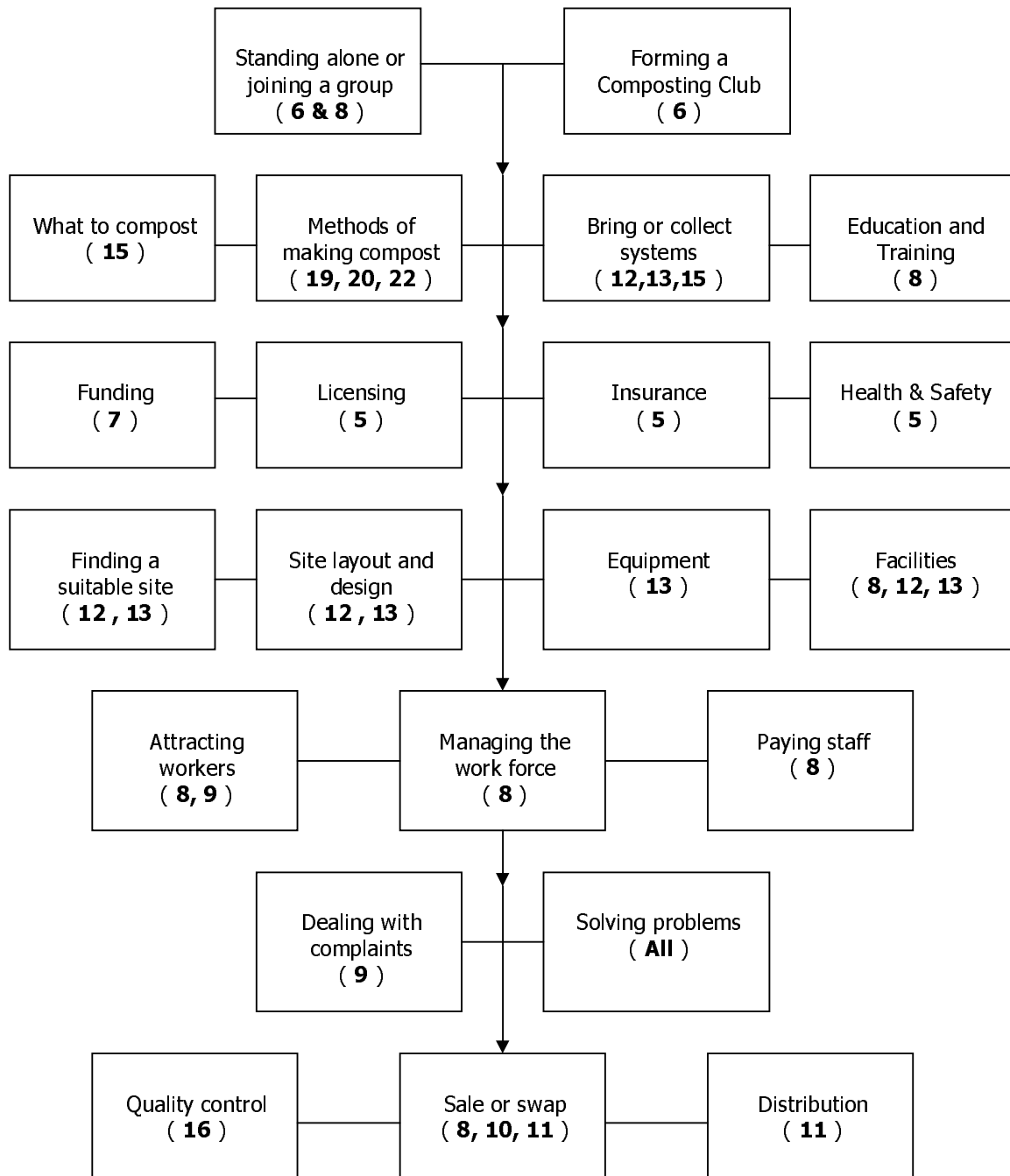
The number of people necessary to operate the enterprise will depend on the scale and methods adopted. To a certain extent this will also depend on the size of community which will serve and be served by it. On the other hand it may be necessary to limit the size of operations to the capabilities of the work force on hand. Start small but with room to expand. That way you will not feel swamped and give up before the scheme has had a real chance.

Aspects to consider

Although fine detail can be filled in as you go along it is as well to be aware of the various legal and practical implications of such a venture before you start. Being aware of possible requirements means you can be prepared for them.

Overleaf is a chart indicating points to cover when planning your enterprise. It refers to the cards in this pack which deal in some depth with each aspect. Once you have decided on the best approach for each subject area you will be ready to start your own Community Composting project.

Points to Consider when Planning a Community Composting Project



Card Title	No.	<i>Card Title</i>	No.	<i>Card Title</i>	No.
Contents/Using this pack	1		11		21
Why Community Compost?	2		12		22
Planning the Enterprise	3	Public Relations & Marketing 3	13	The End Product	23
Getting Started	4	Site Issues 1	14	Shredding & Shredders	24
Legal Aspects 1	5	Site Issues 2	15	Working Without a Shredder	25
Legal Aspects 2	6	Recycling Organic Materials	16	Case Studies 1	26
Grants and Other Funding	7	What Can We Compost?	17	Case Studies 2	27
Labour Needs and Issues	8	Collecting Materials To Recycle	18	Case Studies 3	28
Public Relations & Marketing 1	9	Composting With Schools	19	Case Studies 4	29
Public Relations & Marketing 2	10	To Contain or Not	20	Useful Contacts 1	
		Making Compost 1		Useful Contacts 2	
		Making Compost 2			

Once you have considered all aspects, decided how to run the enterprise and allocated jobs, all you have to do is decide on the date to start and off you go!

Other relevant sections

- All