

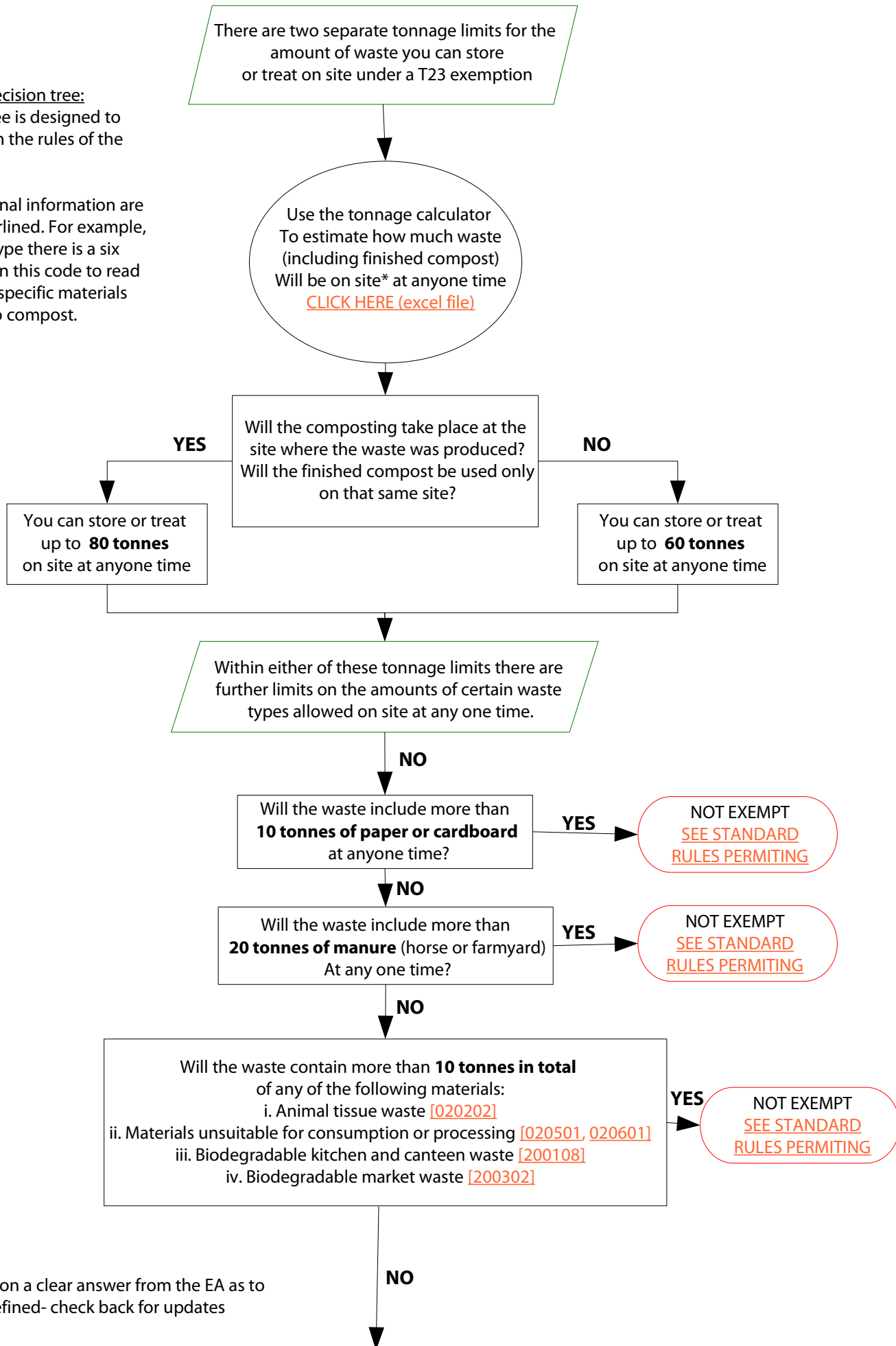


T23 Exemption- Aerobic Composting and associated prior treatment Decision Tree- Is my project eligible for an exemption?

How to use this decision tree:

1. This decision tree is designed to guide you through the rules of the T23 exemption.

2. Links to additional information are orange and underlined. For example, after each waste type there is a six letter code, click on this code to read more about what specific materials you are allowed to compost.



* We are still waiting on a clear answer from the EA as to how a 'site' will be defined- check back for updates
updated 25.05.10

There are also limits on the amount of time certain wastes can be stored prior to treatment

Will any of the following materials be stored for **more than one month** prior to treatment:

- i. Plant tissue waste from inland water dredging [[170506](#)]
- ii. plant waste from agriculture, horticulture, aquaculture or forestry [[020103](#)]
- iii. Horse and farmyard manure [[020106](#)]
- iv. Paper and cardboard [[200101](#)]
- v. Biodegradable plant waste from parks and gardens [[200201](#)]

YES
NOT EXEMPT.
[SEE STANDARD RULES PERMITTING](#)

NO

Will any of the following materials be stored for **more than seven days** prior to treatment:

- i. Animal tissue waste [[020202](#)]
- ii. Materials unsuitable for consumption or processing [[020501, 020601](#)]
- iii. Biodegradable kitchen and canteen waste [[200108](#)]
- iv. Biodegradable market waste [[200302](#)]

YES
NOT EXEMPT.
[SEE STANDARD RULES PERMITTING](#)

NO

If you plan on composting **food waste** make sure you also understand the [Animal By-Product Regulations \(ABPR\)](#)

Will the finished compost be stored on site **for more than 12 months?**
(Remember finished compost counts towards the total tonnage of waste allowed on site at anyone time BUT you are also allowed to store T23 compost with a [U11 exemption](#))

YES
NOT EXEMPT.
[SEE STANDARD RULES PERMITTING](#)

NO

YOU SHOULD BE ELIGIBLE FOR AN EXEMPTION
Follow this link to the Environment Agency online exemptions register.
[CLICK HERE](#)